

TOWARDS AN EVIDENCE-BASED PRACTICE PLAN IN BELGIUM

PART 1: GOVERNANCE PLAN

JEF ADRIAENSSENS, MARIJKE EYSEN, RAF MERTENS, NADIA BENAHMED,
DOMINIQUE PAULUS, FILIP AMEYE, MARC BOSSENS, CARL CAUWENBERG,
ANNELIES COOLS, KURT DOMS, ERIK EVERAERT, MACHTELD GHEYSEN,
MARGARETA HAELTERMAN, MARLEEN LALOUP, HUGUES MALONNE, PASCAL
MEEUS, WIM PENNINGCKX, THIERRY ROISIN, MIEKE WALRAEVENS

Background

- **Conceptual note Minister (July '16)**
 - Scattered EBP landscape and funding
 - Implementation of EBP in end-users is sub-standard
- ➔ **Creation of a federal EBP governance plan for primary care (extension to secondary care?)**
- ➔ **Identification, harmonisation and validation of present EBP actors & activities**
- ➔ **Emphasis on implementation and evaluation**
- ➔ **Improvement of efficiency and effectivity of EBP**



Federal EBP Plan Belgium

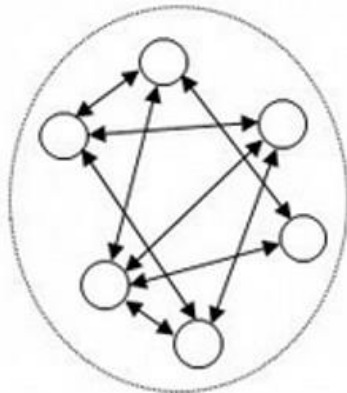
- **Three parts:**
 - **Part 1: Governance model**
 - **Part 2: Change Management and Implementation**
 - **Part 3: Performance Management and Indicators**

Methodology

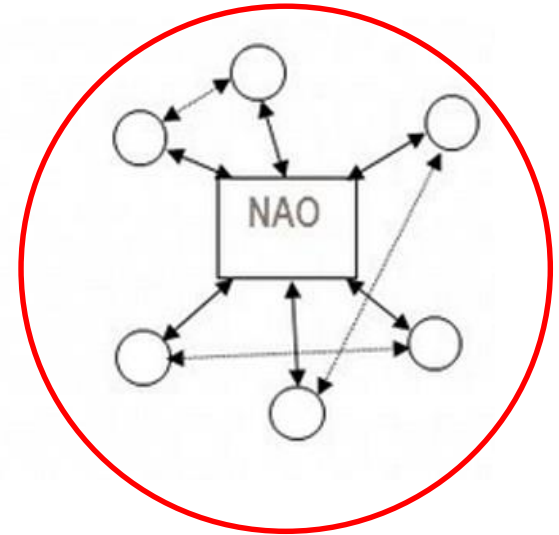
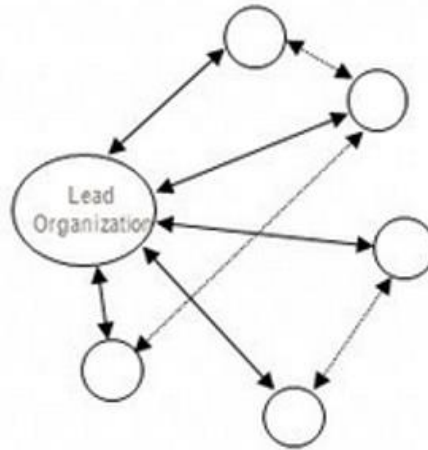
- Network models & concepts: Scientific input by **Technopolis Group & Antwerp Management School**
- Literature on governance approaches for EBM/EBP programs
- Belgian situation
- Foreign good practices of governance for EBP
- In-depth discussion in **Federal steering group** (FOD/SPF, FAGG/AFMPS; RIZIV/INAMI, Kabinet/Cabinet, KCE) on each project step

Governance Models

Visualization of the three network governance forms

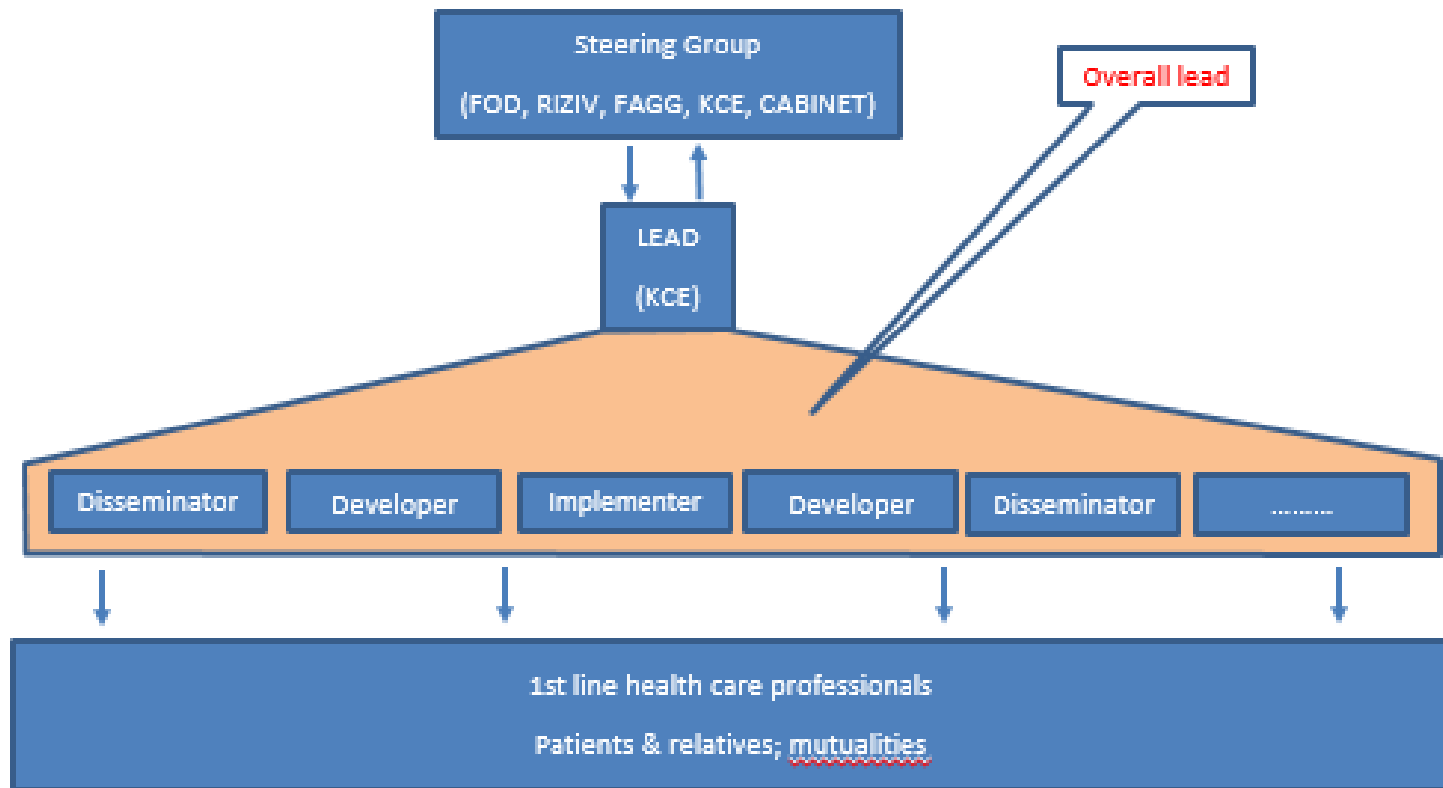


Shared Governance

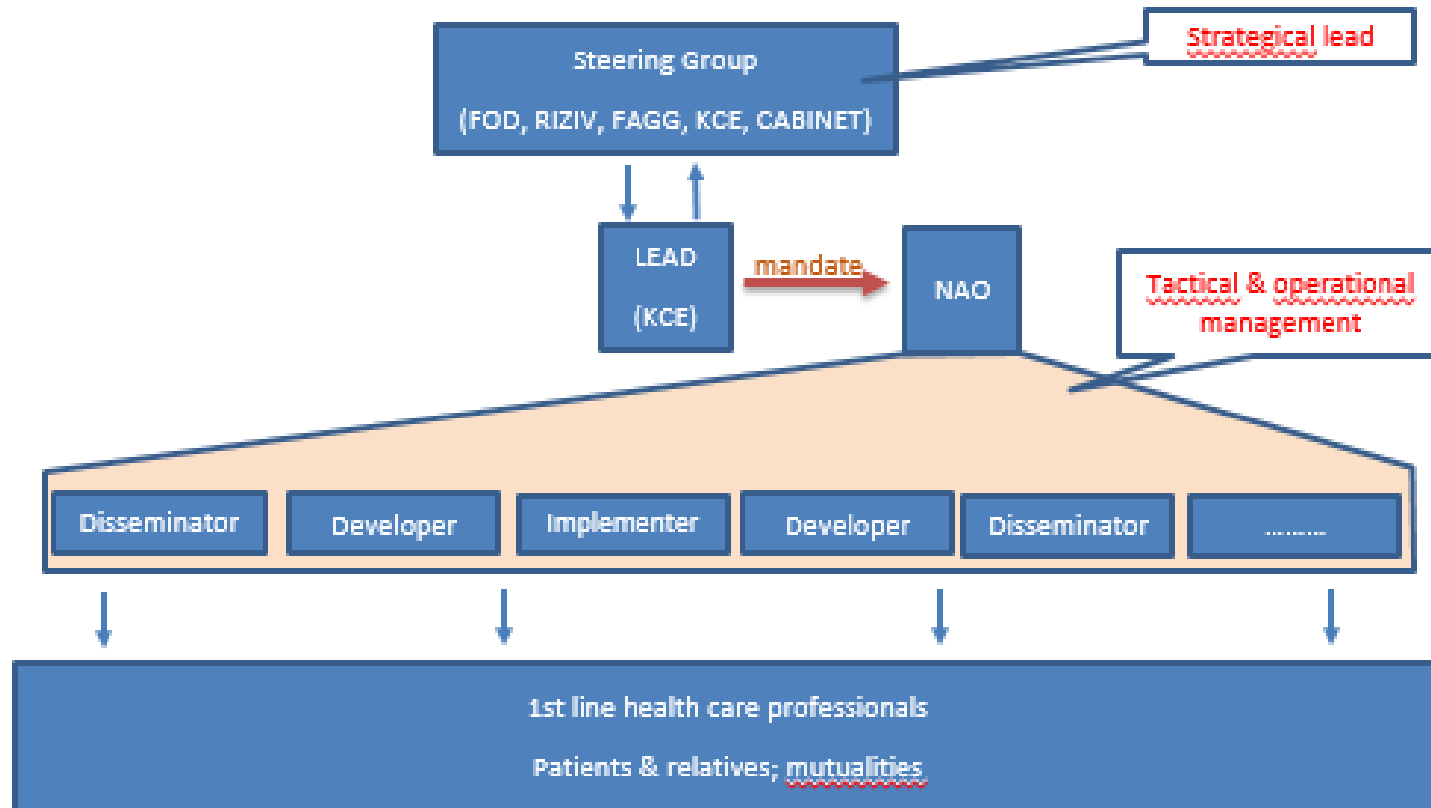


- Increase in trust between network partners
- No blurring of roles and role conflicts
- Distinction:
 - core business of network partners
 - operational and network management

EBPPlan Governance: 1st phase (start)

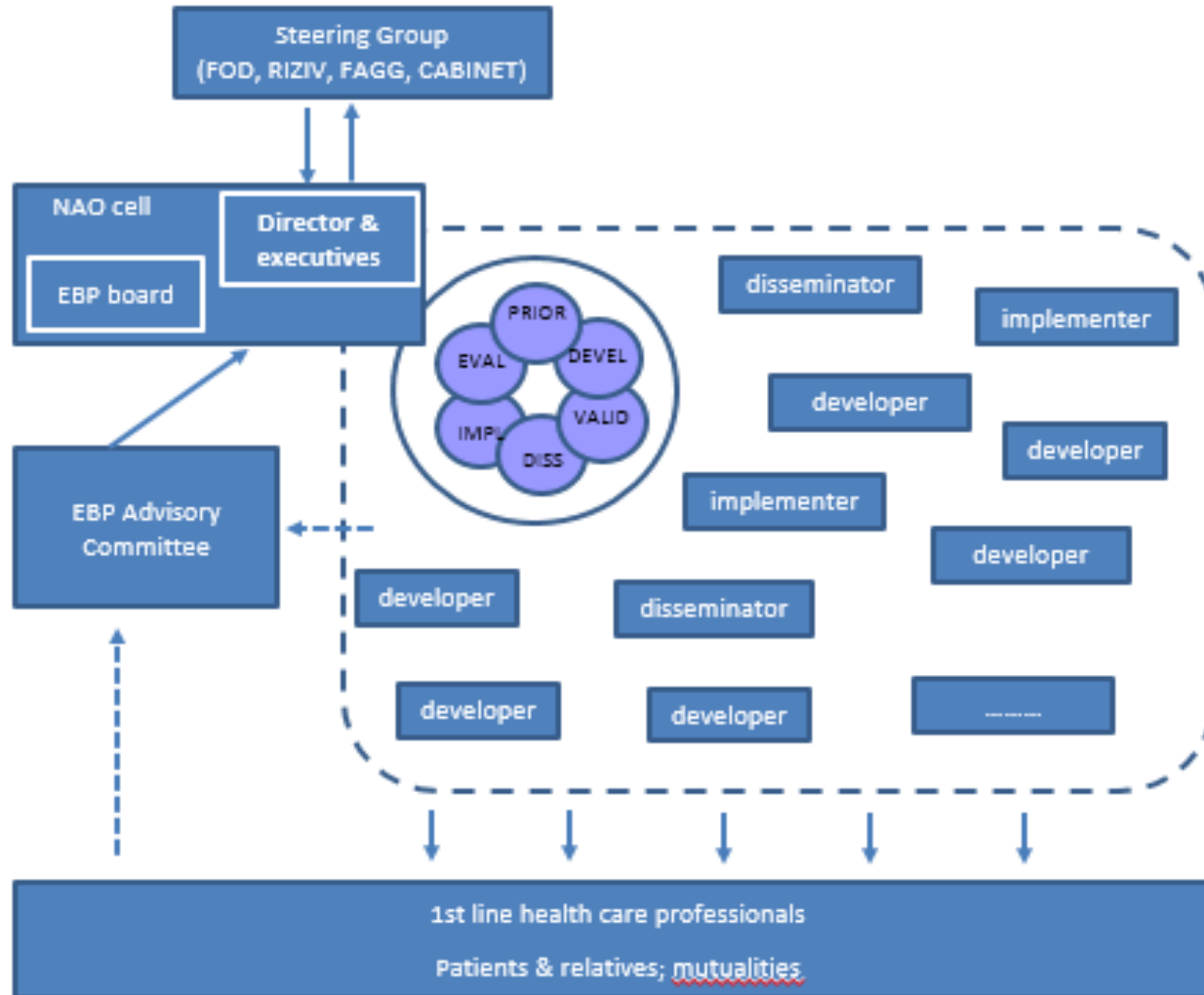


EBPPlan Governance: 1st phase (transition)

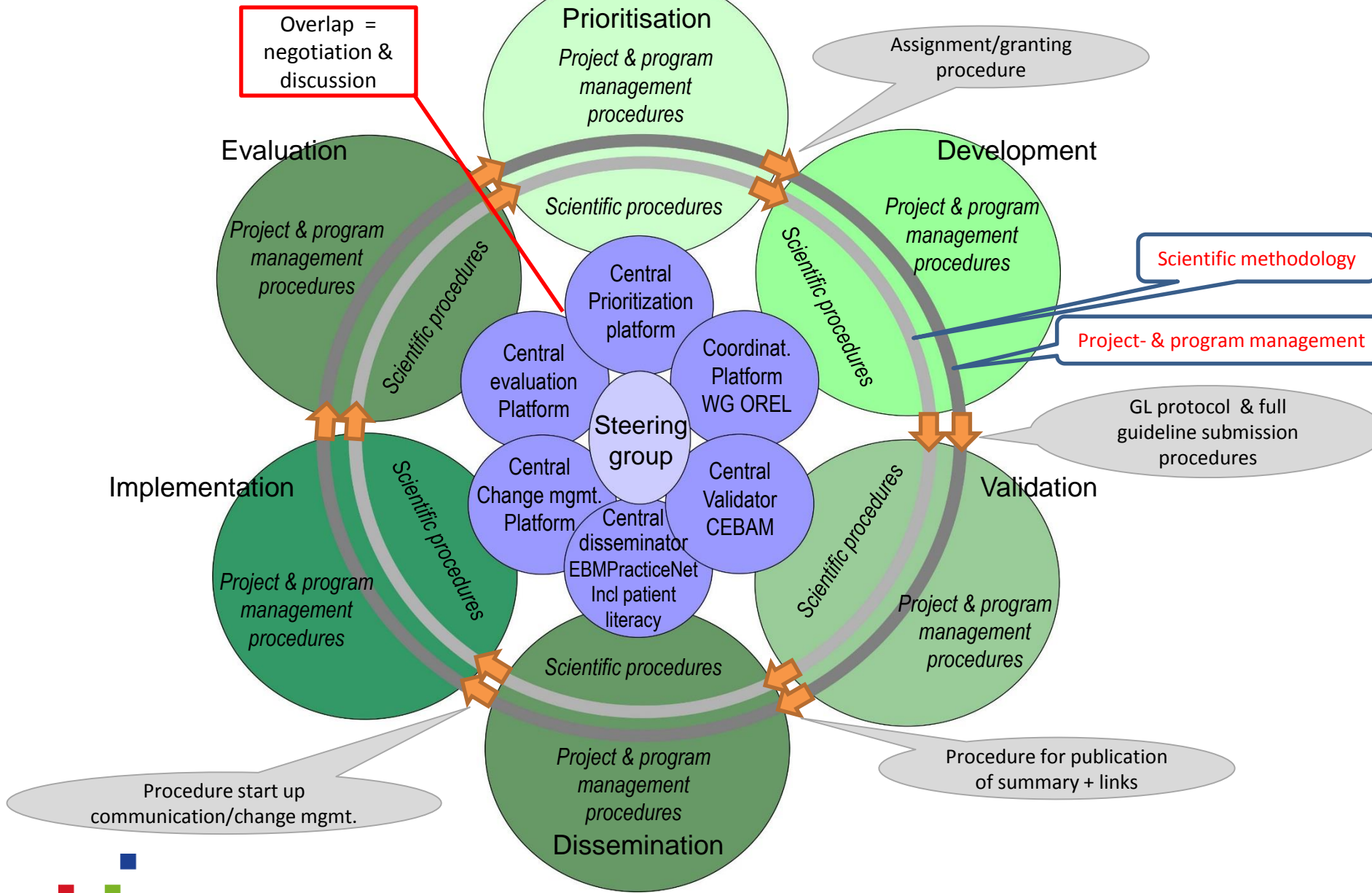


EBPPlan Governance:

2nd (final) phase



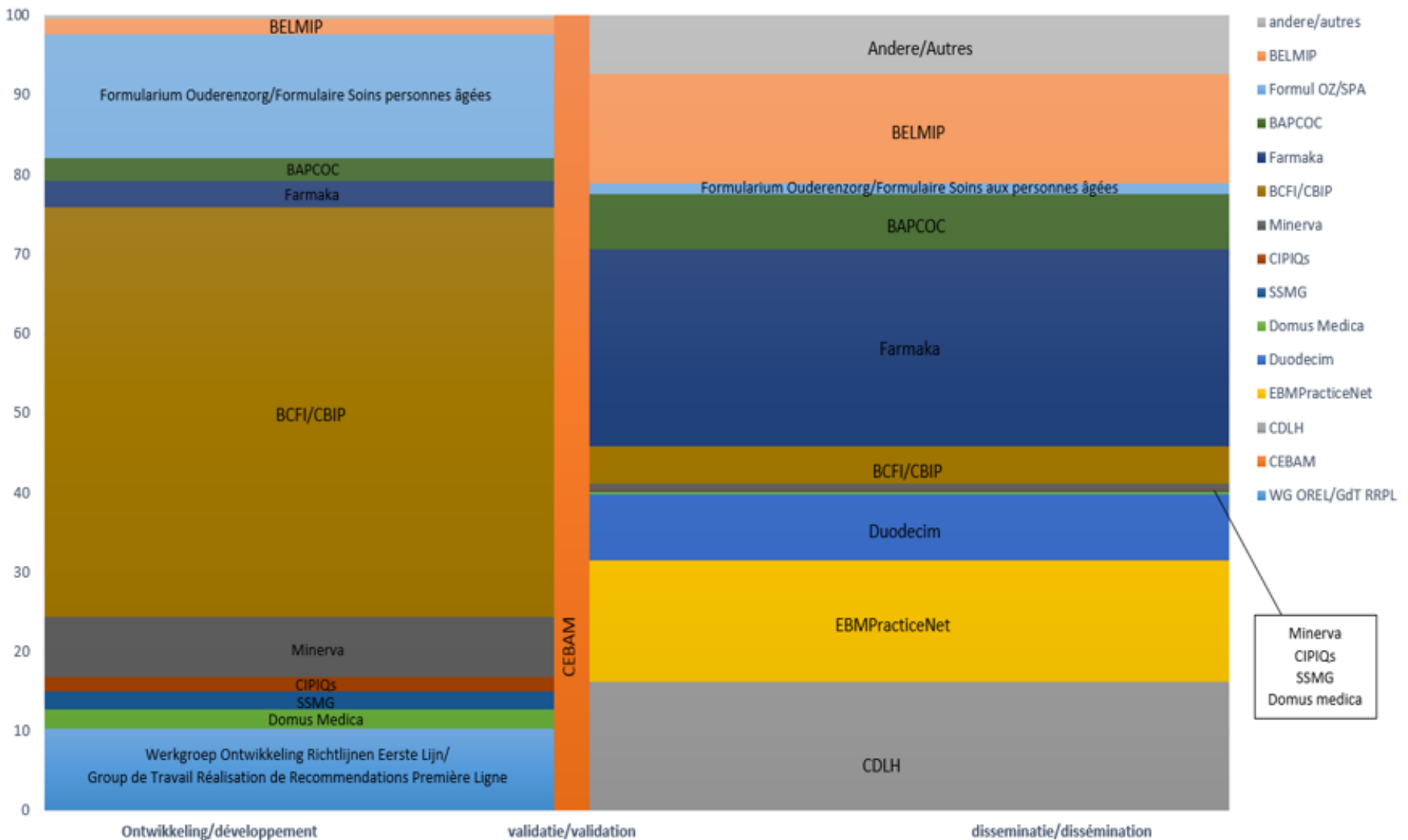
EBP Plan – processes/procedures



Financing

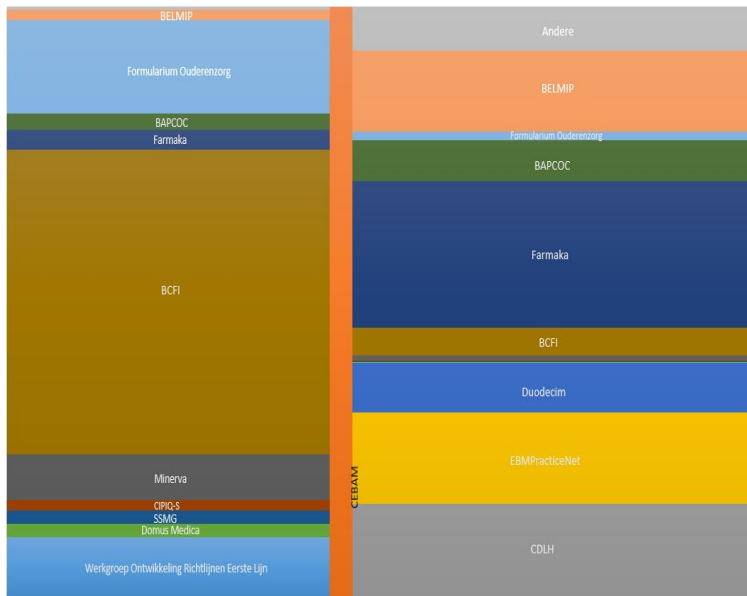
- **Conceptual note Minister (July '16):**
 - More coherence and efficiency
 - Emphasis: implementation
 - Budget governance: KCE (*2nd phase: NAO*)
 - Exception: BCFI/CBIP, Farmaka, BAPCOC:
 - budget governance by FAGG/AFMPS
 - Closed budget

Current Financing: **AS IS (2016)**



Financing the system: closed budget

AS IS

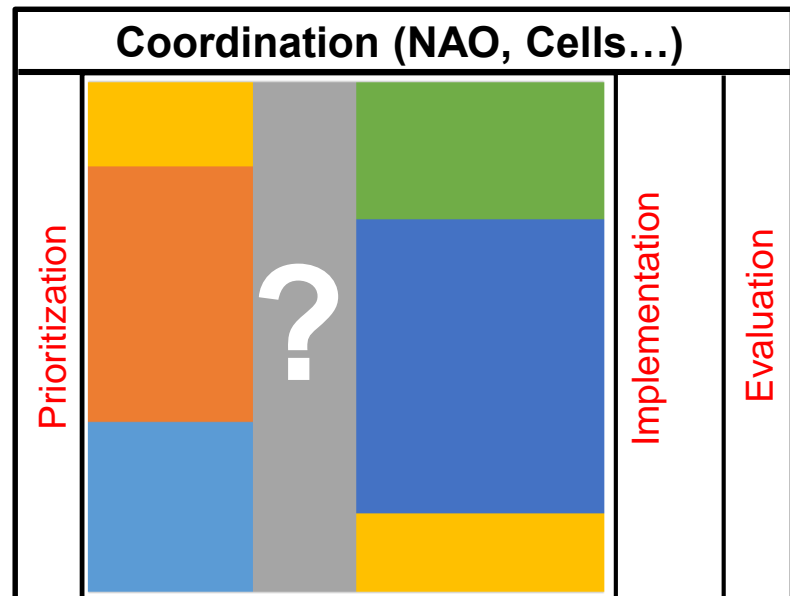


Development

Validation

Dissemination

TO BE



Development Validation Dissemination



Financing

- Global budget options (exc. : budget FAGG/AFMPS)
 - Transfer budgets to KCE (*2nd phase: NAO*)
 - Existing contracting by RIZIV/INAMI – FOD/SPF
 - Transfer budgets to a health administration
- Budget allocation to EBP partners after approval by Steering Committee
- Continuous tasks: stable financing (several years)
 - e.g. NAO, cell/platform coordination, IT structure
- Projects: commissioning by tenders
 - e.g. new guideline, implementation activity...

Colophon

- **Author(s):** Jef Adriaenssens (KCE), Marijke Eyssen (KCE), Raf Mertens (KCE), Nadia Benahmed (KCE), Dominique Paulus (KCE), Filip Ameye (RIZIV – INAMI), Marc Bossens (RIZIV – INAMI), Carl Cauwenbergh (RIZIV – INAMI), Annelies Cools (Kabinet Minister sociale zaken en volksgezondheid), Kurt Doms (FOD Volksgezondheid – SPF Santé publique), Erik Everaert (FAGG – AFMPS), Machteld Gheysen (FOD Volksgezondheid – SPF Santé publique), Greet Haelterman (FOD Volksgezondheid – SPF Santé publique), Hugues Malonne (AFMPS – FAGG), Marleen Laloup (FAGG – AFMPS), Pascal Meeus (INAMI – RIZIV), Wim Penninckx (FAGG – AFMPS), Thierry Roisin (AFMPS – FAGG), Mieke Walraevens (Kabinet Minister sociale zaken en volksgezondheid)
- **Publication date:** 13 July 2017
- **Domain:** Collaborations
- **MeSH:** Evidence-Based Practice -- Delivery of Health Care -- Quality Assurance, Health Care -- Practice Guidelines -- Information Dissemination
- **NLM Classification:**WB 102.5 (evidence-based practice)
- **Language:** English
- **Format:** Adobe® PDF™ (A4)
- **Legal depot:** D/2017/10.273/58
- **Copyright:** KCE reports are published under a “by/nc/nd” Creative Commons Licence <http://kce.fgov.be/content/about-copyrights-for-kce-reports>.

This document is available on the website of the Belgian Health Care Knowledge Centre.



THANK YOU!



Federaal Kenniscentrum voor de Gezondheidszorg
Centre Fédéral d'Expertise des Soins de Santé
Belgian Health Care Knowledge Centre



eunethta
EUROPEAN NETWORK FOR HEALTH TECHNOLOGY ASSESSMENT



INAHTA